

# ASFOTEX™

COLD PATCH ASPHALT MIX



## ASFOTEX is a durable mix for permanent installation

ASFOTEX is a high quality cold patch asphalt mix. ASFOTEX consists of a combination of selected filler mix and asphalt. ASFOTEX enables to patch potholes in the covering and bigger cracks in the road irrespective of weather conditions. Suitable for patching driveways, parking lots, pavements, roads and ramps made of concrete or asphalt. ASFOTEX is used all-the-year-round on wet and dry road coverings.

**ASFOTEX is a durable filler mix for permanent installation – no need for double installation of traditional temporary weather-dependant milled asphalt or emulsion-based cold asphalt and final hot-installed asphalt.**

ASFOTEX is a cold patch asphalt mix, which installation is quick and requires no big labour or additional costs. After ASFOTEX is installed, the road can immediately be opened for traffic. It remains flexible and coherent even at temperatures up to -26 °C and retains its adhesive quality also in wet conditions.

### Preparation

First, the repaired surface is swept with a hard brush or broom. Loose debris, waste, ice or water is removed. It is necessary to achieve better tacking and coherence.

### Usage

#### ASPHALT

No pre-heating or mixing is required. The ready-made mix of ASFOTEX is installed directly in the pothole or crack. If the crack is especially deep, e.g. 15 cm, the mix is installed in 5 cm layers, which are tightened after each layer. There has to be sufficient amount of mix for the repaired hole so that the repaired surface remains a little bit above the level of the road. After the hole is filled with the mix, it is tightened with a spade or a plate-vibrator. The area may be opened for traffic immediately.

#### CONCRETE

Usage is similar to asphalt. After filling the repaired spot is tightened and sprinkled with portland concrete. Cement

harmonizes the colour of the concrete with the patched site. Install sufficient quantity to cover the entire patched area. Tighten the patched place with a spade or a plate-vibrator. Sweep off the residue of portland cement. Open the traffic.

### Consumption rate

The consumption rate depends on the depth and width of the pothole, crack, incision, etc. As a rule 20 kg of ASFOTEX is used to repair a hole with the area of 0.33 m<sup>2</sup> and the depth of 5 cm.

### Colour

Black

### Drying time

Right after the material is tightened.  
Post-setting time is about 1 week.

### Cleaning

All tools must be cleaned right after the usage with solvent-based cleansers like diluents or white spirit.

### Storage

To avoid setting, keep the bags tightly closed if the mix is not used. Storage in wholesale warehouses up to one year.

### Package

ASFOTEX is available in 20 kg bags.

### Caution!

Flammable: keep away from heat, sparks and open flame.  
Use only in a properly ventilated area.  
Avoid permanent or repeated contact with skin.  
Avoid inhaling the vapour. Do not induce vomiting if swallowed and consult a doctor immediately.  
Additional information is on the safety data sheet.



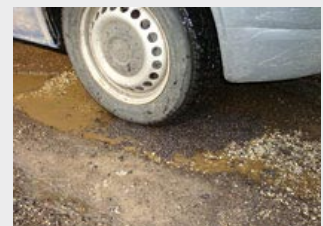
Remove debris, ice or water from the hole in order to improve tacking.



Pour the mix into the cleaned hole straight from the bag.



Level out the surface with a spade or a rake, so that the level of the mix remains a little bit above the road surface.



Tighten the levelled mix with a plate-vibrator or a hand-tamper or by driving over by a car tyre.